

# UNIVERSITY CIRCLE

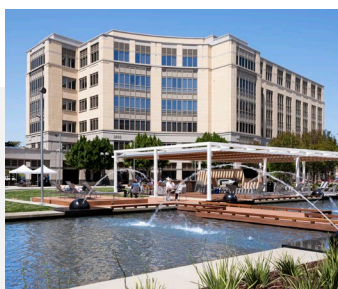


Helping you work

**HEALTHY | SAFE | CONNECTED | SMART**

[www.university-circle.com](http://www.university-circle.com)

## WHAT MAKES UNIVERSITY CIRCLE A GREAT PLACE TO WORK?



### Premier Office Address

Located in the heart of Silicon Valley, this well-connected, three-building office campus features an onsite Four Seasons Hotel and Spa, a large central courtyard, and offers convenient commuting options.



### Engaged with the East Palo Alto Community

From weekly Farmer's Markets to special, open-to-the-public events, University Circle welcomes the local community and provides a place to gather, grow, and celebrate.



### Powered by Renewable Energy

Bipolar University Circle is committed to operating responsibly and uses 100% Renewable Energy from solar and wind through CleanPowerSF's SuperGreen program.

## CERTIFIED TO BE **AMONG THE BEST!**



Certified for efficient, sustainable operations  
2023 campus avg. score: 94



Recognized for best-in-class green building infrastructure and design



Recognized for best-in-class green building infrastructure and design



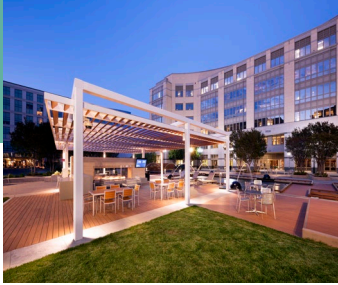
**WiredScore**  
GOLD

Digital connectivity rating for infrastructure and connectivity

# ONSITE AMENITIES JUST FOR TENANTS AT UNIVERSITY CIRCLE

UNIVERSITY CIRCLE | 1900 University Avenue, East Palo Alto, CA 94303

For additional info and amenity access, visit [www.university-circle.com](http://www.university-circle.com) or contact the Property Management team.



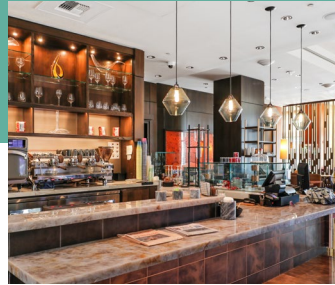
## "The Circle" – Our Large Central Courtyard

Enjoy lunch, meetings, or a quick break by the outdoor fireplace or beside the expansive water features in The Circle at the center of the office complex.



## Weekly **Farmer's Market** in The Circle

University Circle regularly hosts the East Palo Alto Farmer's Market on campus, offering fresh produce and goods from local vendors.



## [Esc] at the Four Seasons

Grab fresh French pastries, a farmers-market salad, cold-pressed juice or fresh coffee, all without leaving the campus.



## Onsite **Parking & Shuttle Service**

Take the complimentary shuttle service or drive and park in the available covered parking. We're a 2023 Best Site for Commuters!

## HERE TO ENHANCE YOUR WORKDAY EXPERIENCE

### Your Property Management Team

**Michelle L. Goudeaux**  
Director – Operations  
[MGoudeaux@lbarealty.com](mailto:MGoudeaux@lbarealty.com)

**Jake Arnet**  
Property Manager  
[JArnet@lbarealty.com](mailto:JArnet@lbarealty.com)

### Your Building Owner / Manager

LBA Realty is a full service real estate investment and management company with a diverse portfolio of office properties in major markets throughout the western United States including California, Colorado, Washington and Arizona. The foundation of our company is to create and execute customized value creation programs for individual properties and to develop strong customer relationships.

